

WGS 84 POSITIONS can be plotted directly on this chart

© Copyright 2019. All rights reserved. No part of this product may be reproduced in any form (including photocopying or by electronic means) without prior permission.

# RIVER HUMBER OLD HARBOUR TO BARTON HAVEN

DEPTHS IN METRES

SCALE 1 : 10000

SURVEYED BY

Harbour Master, Humber

ASSOCIATED BRITISH PORTS

11th and 12th June 2019

Inspection Surveyed 26th June 2019

Depths are in metres and decimetres reduced to the chart datum given below  
Underlined figures are drying heights in metres and decimetres above chart datum  
Overhead clearance heights are above Highest Astronomical Tide

PLACE	Heights in metres above Chart Datum				Chart Datum and remarks
	M.H.W.S.	M.H.W.N.	M.L.W.N.	M.L.W.S.	
KING GEORGE DOCK	7.6	6.0	2.5	0.7	3.9m below O.D. Newlyn } Being approx. L.A.T.
ALBERT DOCK	7.6	5.9	2.5	0.7	3.9m " " " }
HUMBER BRIDGE	7.2	5.4	1.9	0.3	3.3m " " " }

Projection: Transverse Mercator. National Grid references are given along borders of chart

Whilst every care was taken in the preparation of this chart, which is intended to provide Mariners with the data which Associated British Ports possessed at the time of its preparation, ABP gives notice that it neither, on account of the quickly shifting character of the river bed, nor warrants in any way, no warranty is afforded that such data can be relied upon and further, no responsibility can be accepted by ABP for any inaccuracy in the Chart or omission therefrom.

Blue Line Marks Inspection Area

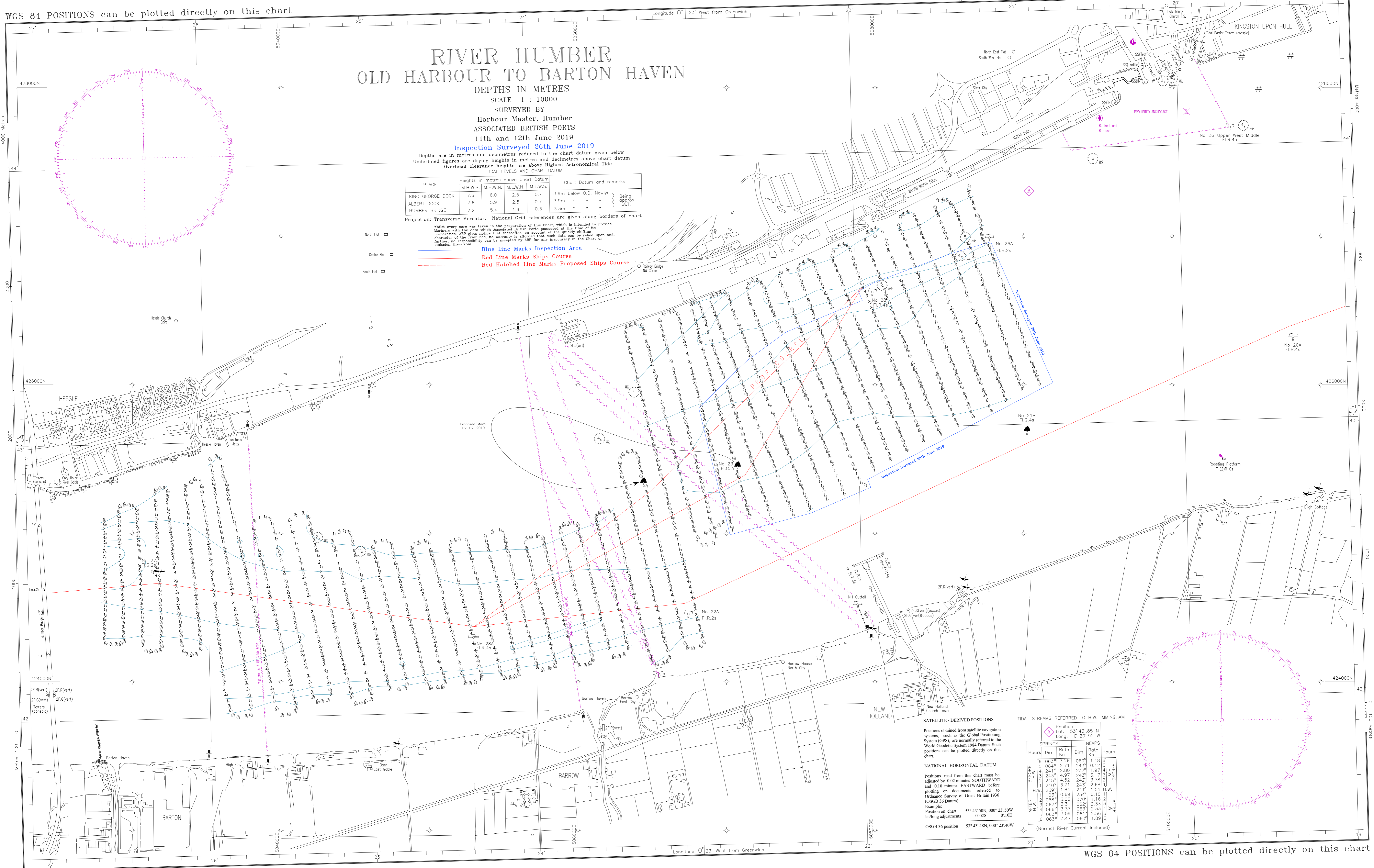
Red Line Marks Ships Course

Red Hatched Line Marks Proposed Ships Course

North Flat

Centre Flat

South Flat



### SATELLITE - DERIVED POSITIONS

Positions obtained from satellite navigation systems, such as the Global Positioning System (GPS), are normally referred to the World Geodetic System 1984 Datum. Such positions can be plotted directly on this chart.

### NATIONAL HORIZONTAL DATUM

Positions read from this chart must be adjusted by 0.02 minutes SOUTHWARD and 0.10 minutes EASTWARD before plotting on documents referred to Ordnance Survey of Great Britain 1936 (OSGB 36 Datum).  
Example:  
Position on chart 53° 43' 50N, 000° 23' 50W  
lat/long adjustments 0.02S 0.10E  
OSGB 36 position 53° 43' 48N, 000° 23' 40W

### TIDAL STREAMS REFERRED TO H.W. IMMINGHAM

SPRINGS				NEAPS			
Hours	Dirn	Rate kn	Rate kn	Hours	Dirn	Rate kn	Rate kn
6	063°	3.26	060°	1.48	6	063°	3.26
064°	2.71	243°	0.12	2.52	064°	2.71	243°
065°	2.80	237°	1.97	2.53	065°	2.80	237°
243°	4.97	243°	3.17	2.43	243°	4.97	243°
245°	4.52	242°	3.78	2.45	245°	4.52	242°
249°	3.71	243°	2.68	2.49	249°	3.71	243°
H.W.	2.39	1.84	241°	1.51	H.W.	2.39	1.84
1	103°	3.09	2.34	0.10	1	103°	3.09
066°	3.37	069°	2.33	0.99	066°	3.37	069°
067°	3.31	062°	2.33	0.99	067°	3.31	062°
068°	3.09	061°	2.36	0.99	068°	3.09	061°
063°	3.47	060°	1.89		063°	3.47	060°

(Normal River Current Included)

Hessle Sand

WGS 84 POSITIONS can be plotted directly on this chart