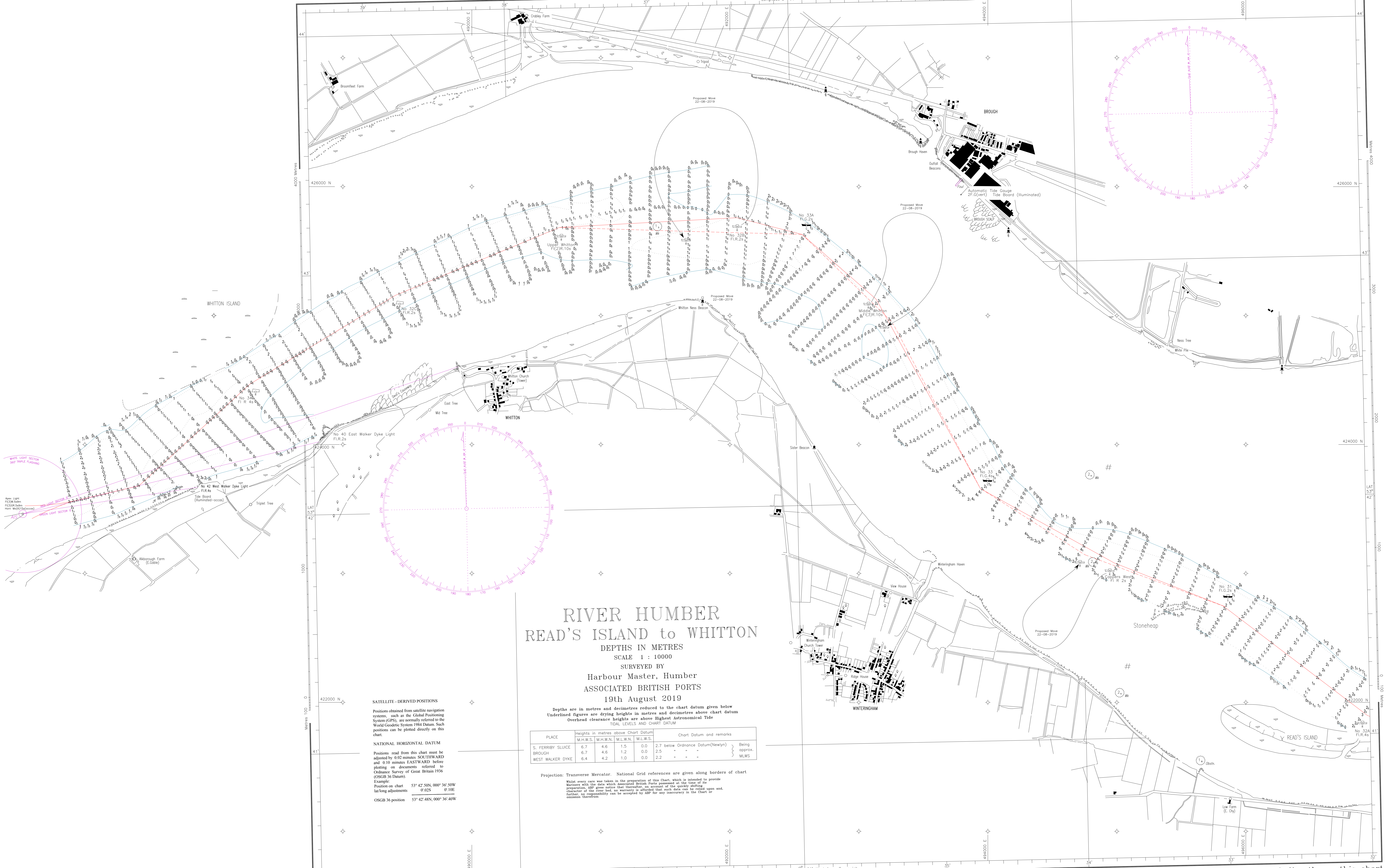


WGS 84 POSITIONS can be plotted directly on this chart



# RIVER HUMBER READ'S ISLAND to WHITTON

DEPTHS IN METRES  
SCALE 1 : 10000

SURVEYED BY  
Harbour Master, Humber  
ASSOCIATED BRITISH PORTS  
19th August 2019

Depths are in metres and decimetres reduced to the chart datum given below  
Underlined figures are drying heights in metres and decimetres above chart datum  
Overhead clearance heights are above Highest Astronomical Tide

| PLACE             | Heights in metres above Chart Datum |          |          | Chart Datum and remarks                                   |
|-------------------|-------------------------------------|----------|----------|---|
|                   | M.H.W.S.                            | M.H.W.N. | M.L.W.N. |   |
| S. FERRIBY SLUICE | 6.7                                 | 4.6      | 1.5      | 0.0 2.7 below Ordnance Datum(Newlyn) } Being approx. MLWS |
| BROUGH            | 6.7                                 | 4.6      | 1.2      | 0.0 2.5 - - -   |
| WEST WALKER DYKE  | 6.4                                 | 4.2      | 1.0      | 0.0 2.2 - - -   |

Projection: Transverse Mercator. National Grid references are given along borders of chart  
Whilst every care was taken in the preparation of this Chart, which is intended to provide Mariners with the data which constituted British Ports as shown at the time of its preparation, ABP give notice that thereafter, on account of the quickly shifting character of the river, it is necessary to inform that such data can be relied upon and, further, no responsibility can be accepted by ABP for any inaccuracy in the Chart or omission therefrom.

**SATELLITE - DERIVED POSITIONS**  
Positions obtained from satellite navigation systems, such as the Global Positioning System (GPS), are normally referred to the World Geodetic System 1984 Datum. Such positions can be plotted directly on this chart.  
**NATIONAL HORIZONTAL DATUM**  
Positions read from this chart must be adjusted by 0.02 minutes SOUTHWARD and 0.10 minutes EASTWARD before plotting on documents referred to Ordnance Survey of Great Britain 1936 (OSGB 36 Datum).  
Example:  
Position on chart 53° 42' 50N, 000° 36' 50W  
lat/long adjustments 07.02S 07.10E  
OSGB 36 position 53° 42' 48N, 000° 36' 40W