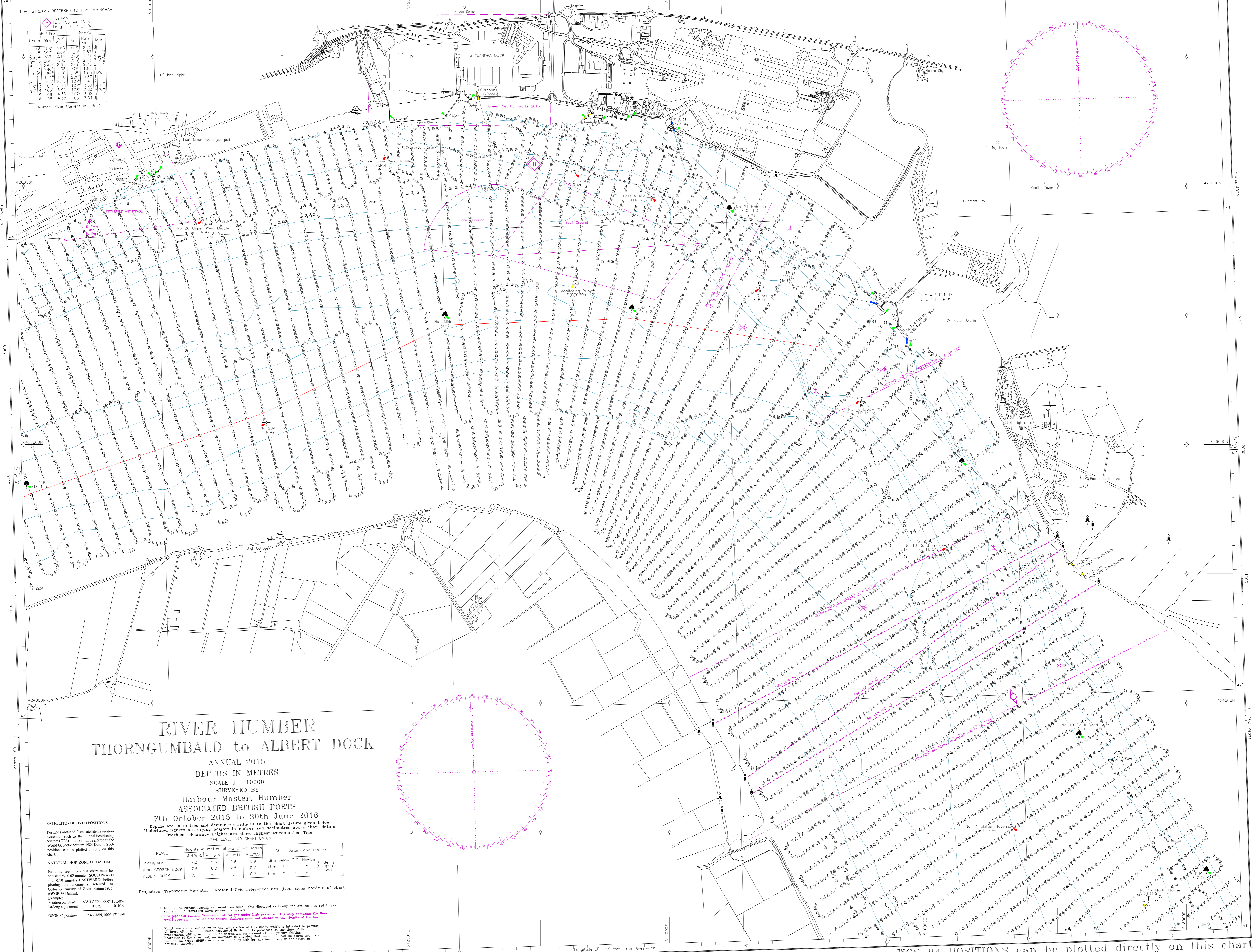


WGS 84 POSITIONS can be plotted directly on this chart

TIDAL STREAMS REFERRED TO H.W. MNINGHAM

Hours	Date	Rate	Dirn	Hours
108	2.83	1.05	2.2	0
097	2.62	1.00	0.6	0
284	2.16	2.06	1.7	0
286	4.05	2.83	2.9	0
287	4.05	2.83	2.9	0
288	2.38	2.76	1.8	0
289	1.00	2.05	1.0	0
112	1.00	2.05	0.3	0
098	2.73	1.07	1.4	0
101	3.16	1.02	2.6	0
103	3.92	1.08	2.5	0
106	4.36	1.07	3.0	0
108	4.36	1.07	3.0	0

(Normal River Current included)



RIVER HUMBER THORNGUMBALD to ALBERT DOCK

ANNUAL 2015
DEPTHS IN METRES
SCALE 1 : 10000
SURVEYED BY
Harbour Master, Humber
ASSOCIATED BRITISH PORTS
7th October 2015 to 30th June 2016

Depths are in metres and decimetres reduced to the chart datum given below
Underlined figures are drying heights in metres and decimetres above chart datum
Overhead clearance heights are above highest astronomical tide

TIDAL LEVEL AND CHART DATUM

PLACE	heights in metres above Chart Datum				Chart Datum and remarks	
	M.H.W.S.	M.H.W.N.	M.L.W.N.	M.L.W.S.		
MMINGHAM	7.3	5.8	2.6	0.9	3.9m below O.D. Neelyn	Being replaced.
KING GEORGE DOCK	7.6	6.0	2.5	0.7	3.9m	L.A.T.
ALBERT DOCK	7.6	5.9	2.5	0.7	3.9m	

Projection: Transverse Mercator. National Grid references are given along borders of chart

1. Light stars without legends represent two fixed lights displayed vertically and are seen as red to port and green to starboard when proceeding upstream.
2. One light starboard transverse red and one light port transverse red and one light port transverse red would form an immediate fire hazard. Mariners must not anchor in the vicinity of the lights.
3. Values every one was taken in the presence of the chart which is intended to provide mariners with the data which Associated British Ports possess at the time of its preparation. It is the responsibility of the user to ensure that the data is up to date. The character of the river bed, no warranty is offered that such data can be relied upon and further, no responsibility can be accepted for any inaccuracy in the chart or omission therefrom.

WGS 84 POSITIONS can be plotted directly on this chart