

WGS 84 POSITIONS can be plotted directly on this chart

RIVER HUMBER Grimsby Middle

DEPTHS IN METRES SCALE 1 : 12 500

SURVEYED BY
**Harbour Master, Humber
ASSOCIATED BRITISH PORTS
29th March 2022**

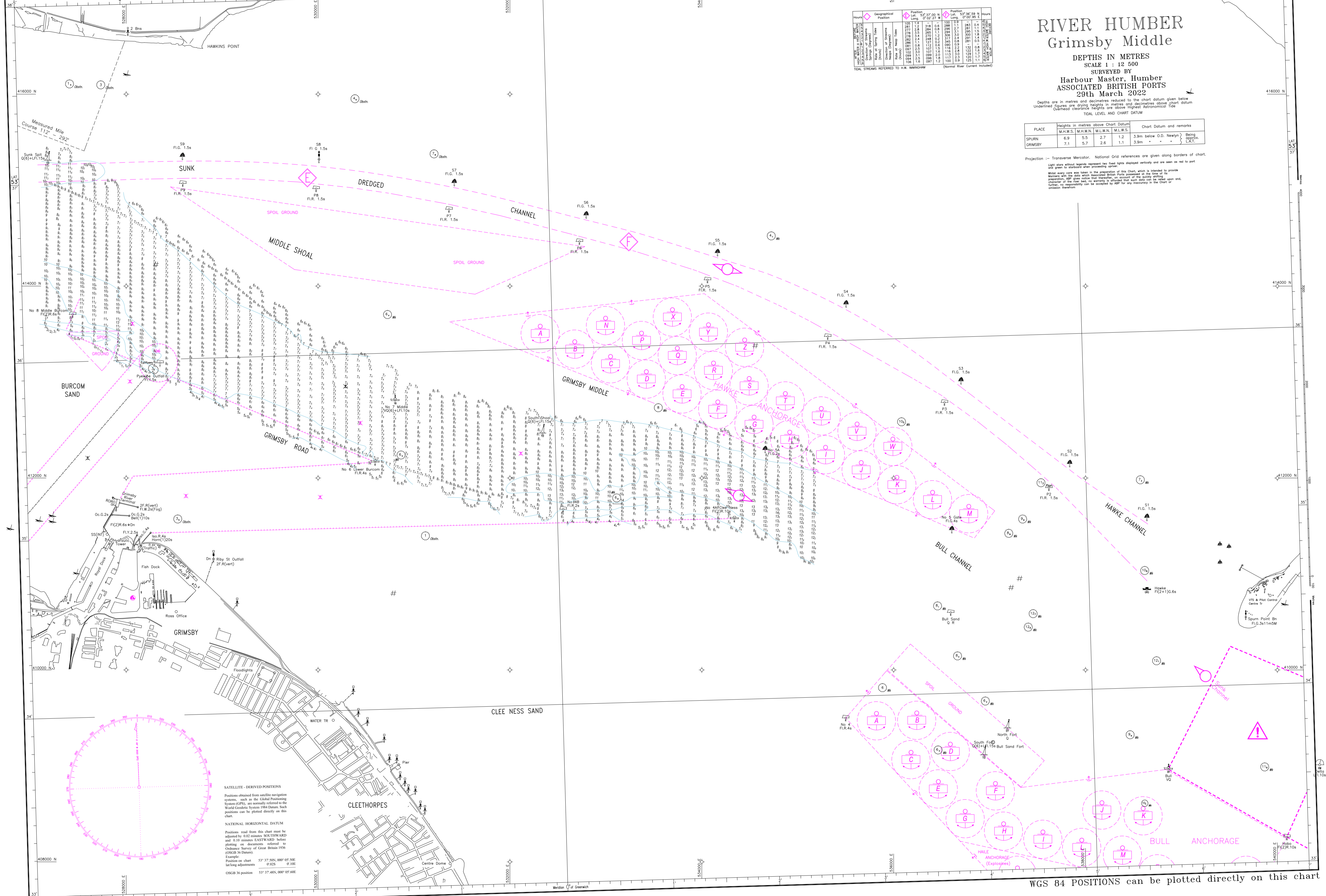
Depths are in metres and declinatres reduced to the Chart datum given below
Underlined figures are drying heights in metres and declinatres above chart datum
Overhead clearance heights are above Highest Astronomical Tide

PLACE	Heights in metres above Chart Datum				Chart Datum and remarks
	M.H.W.S.	M.H.W.N.	M.L.W.N.	M.L.W.S.	
SPURN	6.9	5.5	2.7	1.2	3.9m below O.D. Newlyn
GRIMSBY	7.1	5.7	2.6	1.1	3.9m - - - - - Being opposite LAT.

Projection :- Transverse Mercator. National Grid references are given along borders of chart.

Light data without legends represent two fixed lights displayed vertically and are seen as red to port and green to starboard when proceeding seaward.
When every case was taken in the preparation of this Chart, which is intended to provide Masters with the data which Associated British Ports considered of the greatest importance, all green lights and buoys were on records of the day. Consequently, the accuracy of the chart is not guaranteed in respect of any change of light or buoyage since the date of publication. The accuracy of the chart is not guaranteed in respect of any change of light or buoyage since the date of publication.

Symbol	Geographical Position	Position		Name
		Lat. 53° 00' 00" N	Long. 0° 00' 00" E	
105	105	1.4	1.4	105
106	106	1.2	1.2	106
107	107	1.0	1.0	107
108	108	0.8	0.8	108
109	109	0.6	0.6	109
110	110	0.4	0.4	110
111	111	0.2	0.2	111
112	112	0.0	0.0	112
113	113	0.2	0.2	113
114	114	0.4	0.4	114
115	115	0.6	0.6	115
116	116	0.8	0.8	116
117	117	1.0	1.0	117
118	118	1.2	1.2	118
119	119	1.4	1.4	119
120	120	1.6	1.6	120



SATELLITE-DERIVED POSITIONS
Positions obtained from satellite navigation systems, such as the Global Positioning System (GPS), are normally referred to the World Geodetic System 1984 Datum. Such positions can be plotted directly on this chart.

NATIONAL HORIZONTAL DATUM
Positions read from this chart must be adjusted by 0.02 metres SOUTHWARD and 0.10 metres EASTWARD before plotting on documents referred to Ordnance Survey of Great Britain 1956 (OSGB 36 Datum).
Example:
Position on chart 53° 37' 30N, 00° 07' 30E
Latitude adjustment 0.02N 0.10E
OSGB 36 position 53° 37' 48N, 00° 07' 50E

WGS 84 POSITIONS can be plotted directly on this chart