

WGS 84 POSITIONS can be plotted directly on this chart

RIVER HUMBER OLD HARBOUR TO BARTON HAVEN

DEPTHS IN METRES

SCALE 1 : 10000

SURVEYED BY

Harbour Master, Humber

ASSOCIATED BRITISH PORTS

2nd March 2021

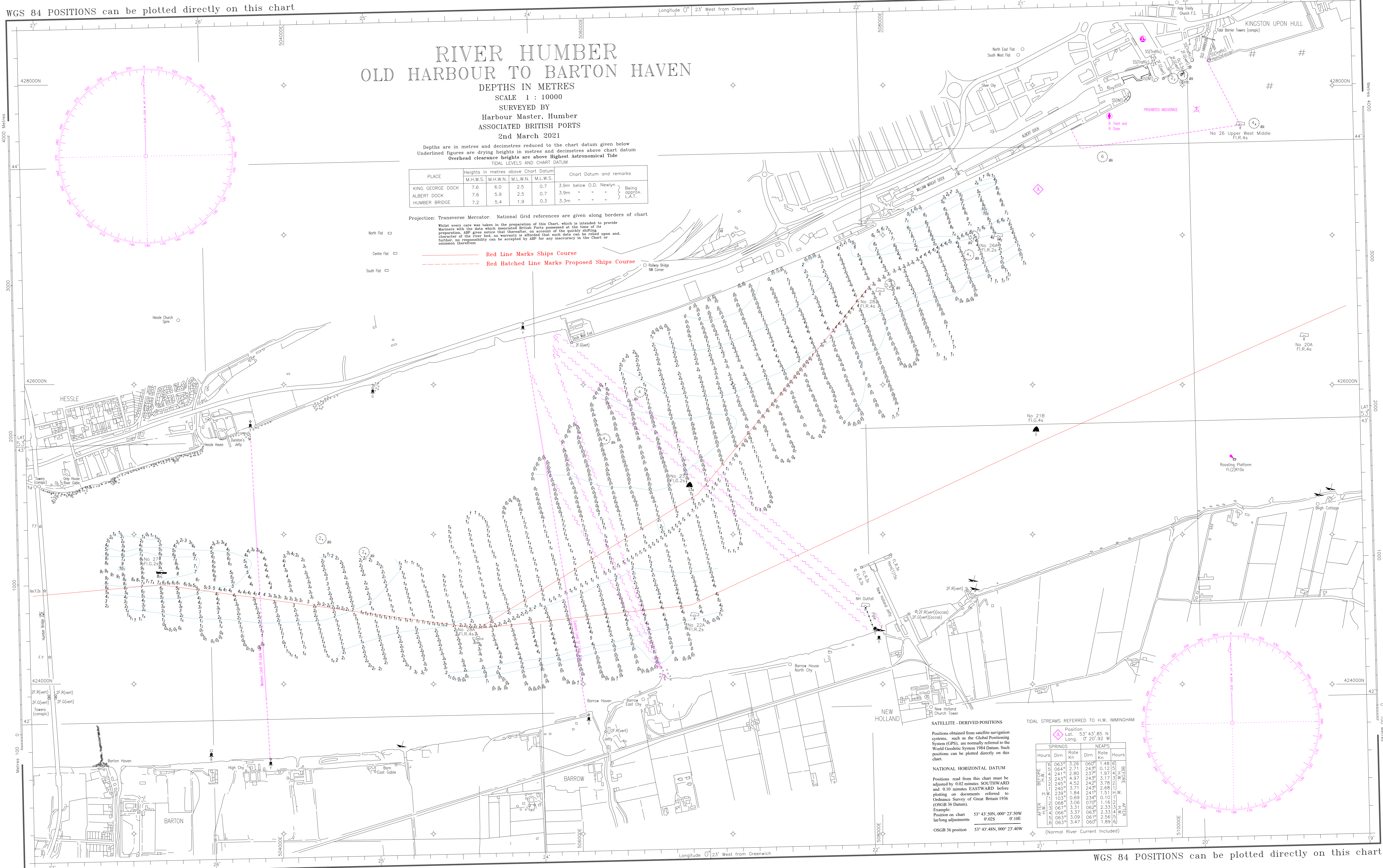
Depths are in metres and decimetres reduced to the chart datum given below
Underlined figures are drying heights in metres and decimetres above chart datum
Overhead clearance heights are above Highest Astronomical Tide

PLACE	Heights in metres above Chart Datum				Chart Datum and remarks
	M.H.W.S.	M.H.W.N.	M.L.W.N.	M.L.W.S.	
KING GEORGE DOCK	7.6	6.0	2.5	0.7	3.9m below O.D. Newlyn Being approx. L.A.T.
ALBERT DOCK	7.6	5.9	2.5	0.7	3.9m - - -
HUMBER BRIDGE	7.2	5.4	1.9	0.3	3.3m - - -

Projection: Transverse Mercator. National Grid references are given along borders of chart

Red Line Marks Ships Course
Red Hatched Line Marks Proposed Ships Course

- North Flat □
- Centre Flat □
- South Flat □



SATELLITE-DERIVED POSITIONS

Positions obtained from satellite navigation systems, such as the Global Positioning System (GPS), are normally referred to the World Geodetic System 1984 Datum. Such positions can be plotted directly on this chart.

NATIONAL HORIZONTAL DATUM

Positions read from this chart must be adjusted by 0.02 minutes SOUTHWARD and 0.10 minutes EASTWARD before plotting on documents referred to Ordnance Survey of Great Britain 1936 (OSGB 36 Datum).
Example:
Position on chart 53° 43' 50N, 000° 23' 50W
lat/long adjustments 0.02S 0.10E
OSGB 36 position 53° 43' 48N, 000° 23' 40W

TIDAL STREAMS REFERRED TO H.W. IMMINGHAM

Hours	SPRINGS		NEAPS	
	Dirn	Rate Kn	Dirn	Rate Kn
BEFORE H.W.	063°	3.26	060°	1.48
H.W.	064°	2.71	243°	0.12
AFTER H.W.	241°	2.80	237°	1.97
H.W.	243°	4.97	243°	3.17
BEFORE H.W.	245°	4.52	242°	3.76
H.W.	240°	3.71	243°	2.68
AFTER H.W.	239°	1.94	241°	1.51
H.W.	103°	0.69	234°	0.10
BEFORE H.W.	068°	3.06	070°	1.16
H.W.	068°	3.31	062°	2.33
AFTER H.W.	066°	3.37	063°	2.33
H.W.	063°	3.09	061°	2.56
BEFORE H.W.	063°	3.47	060°	3.89

(Normal River Current Included)

WGS 84 POSITIONS can be plotted directly on this chart