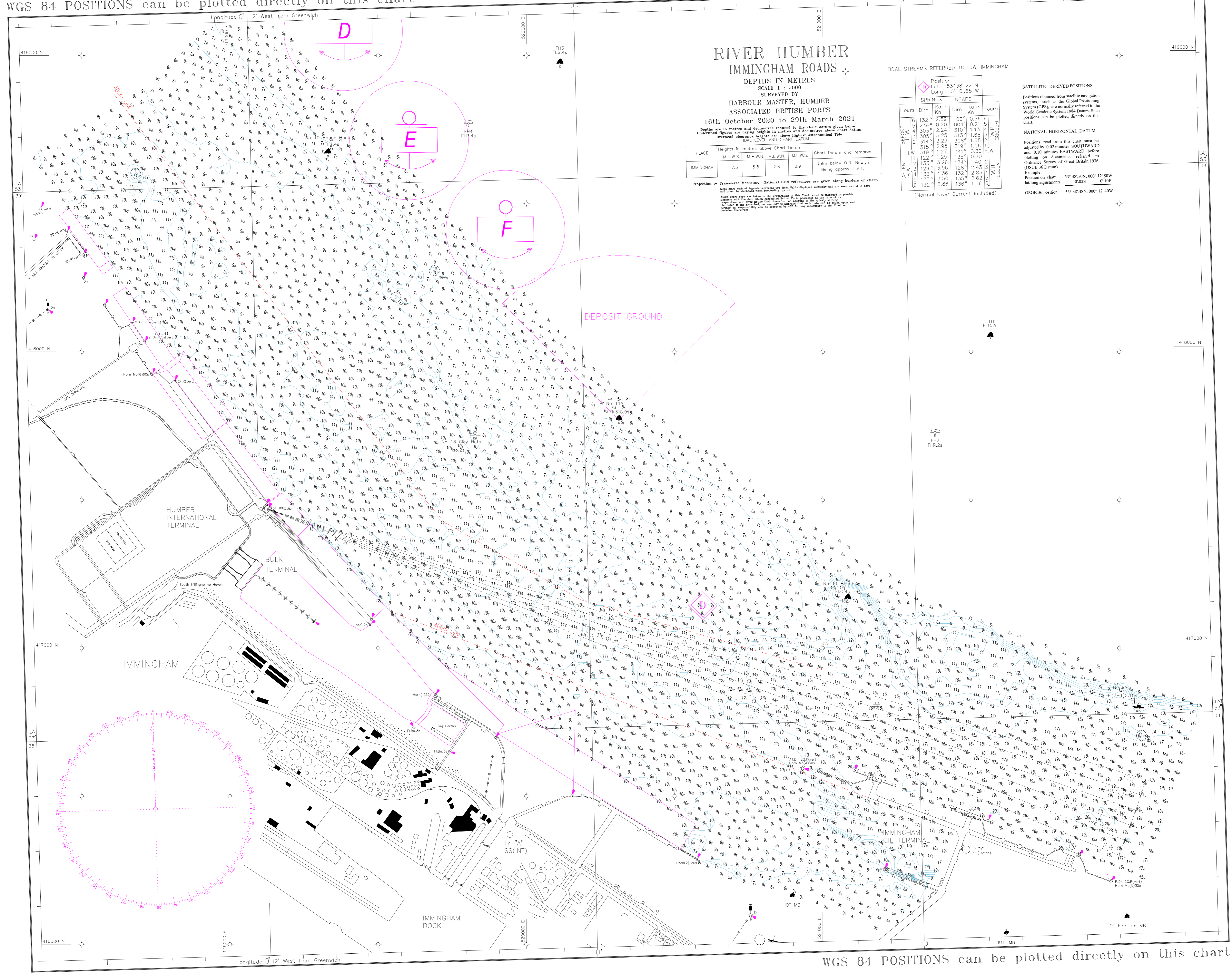


WGS 84 POSITIONS can be plotted directly on this chart

© Copyright 2021. All rights reserved. No part of this product may be reproduced in any form (including photocopying or by electronic means) without prior permission.



# RIVER HUMBER IMMINGHAM ROADS

DEPTHS IN METRES  
SCALE 1 : 5000  
SURVEYED BY  
HARBOUR MASTER, HUMBER  
ASSOCIATED BRITISH PORTS

16th October 2020 to 29th March 2021  
Depths are in metres and decimetres reduced to the chart datum given below  
Underline figures are drying heights in metres and decimetres above chart datum  
Overhead clearance heights are above Highest Astronomical Tide  
TIDAL LEVEL AND CHART DATUM

PLACE	M.H.W.S.	M.H.W.N.	M.L.W.N.	M.L.W.S.	Chart Datum and remarks
IMMINGHAM	7.3	5.8	2.6	0.9	3.9m below O.D. Newlyn Being approx. L.A.T.

Projection :- Transverse Mercator. National Grid references are given along borders of chart.  
Light state without legends represent the flash light displayed vertically and are seen as red in port.  
Light state with legends represent the flash light displayed vertically and are seen as red in port.  
When every row was taken in the 16th April 2021 from position at the time of its  
bearing with the same which was observed at the time of the survey. It is the  
responsibility of the user to verify the accuracy of the data and to ensure that  
it is up to date. It is not the responsibility of the publisher to ensure that the  
information is up to date.

TIDAL STREAMS REFERRED TO H.W. IMMINGHAM

Position Lat. 53°38'22" N Long. 0°10'65" W	SPRINGS		NEAPS		Hours
	Dirn	Rate Kn	Dirn	Rate Kn	
BEFORE H.W.	132°	2.59	106°	0.76	6
	129°	2.24	104°	0.71	5
	126°	1.89	102°	0.66	4
	123°	1.54	100°	0.61	3
	120°	1.19	98°	0.56	2
	117°	0.84	96°	0.51	1
AFTER H.W.	132°	2.59	106°	0.76	6
	129°	2.24	104°	0.71	5
	126°	1.89	102°	0.66	4
	123°	1.54	100°	0.61	3
	120°	1.19	98°	0.56	2
	117°	0.84	96°	0.51	1

(Normal River Current Included)

**SATELLITE-DERIVED POSITIONS**  
Positions obtained from satellite navigation systems, such as the Global Positioning System (GPS), are normally referred to the World Geodetic System 1984 Datum. Such positions can be plotted directly on this chart.  
**NATIONAL HORIZONTAL DATUM**  
Positions read from this chart must be adjusted by 0.02 minutes SOUTHWARD and 0.10 minutes EASTWARD before plotting on documents referred to Ordnance Survey of Great Britain 1936 (OSGB 36 Datum).  
Example:  
Position on chart 53°38'50N, 000°12'50W  
lat/long adjustments 0.02S 0.10E  
OSGB 36 position 53°38'48N, 000°12'40W

WGS 84 POSITIONS can be plotted directly on this chart